

personal Design Your ^{personal} Hawaiian Quilt

2-, 3-, 4-day Workshops

Workshop Supply List

In the Hawaiian tradition, every Hawaiian quilt is an original design. This workshop is your opportunity to design your very own pattern in whatever size you desire (block, wall, bed). No Hawaiian quilting experience or drawing skills are required. If you have a desire to design your unique Hawaiian quilt and can cut with scissors – you can do this!

2-day Workshop: Explore three ways to design Hawaiian quilts of any size (block, wall, bed). No fabric or sewing in this class...it is all done with paper and scissors.

3-day Workshop: You will design your personal Hawaiian quilt, get it cut out of your fabric and pin baste it to the background fabric. You will practice my needleturn appliqué techniques on a small practice piece and go home knowing the next steps to keep appliquéing your quilt.

4-day Workshop: You will do everything in the 3-day workshop, PLUS, we will talk about next steps, quilting and finishing, with added demos if time permits.



- REQUIRED: “Design Your Personal Hawaiian Quilt”** book & DVD set from Pacific Rim Quilt Company. Available in class or in advance from www.pacificrimquilt.com/shop/lessons/
 - Inspiration Photos:** These can be photographs, books, calendars, coloring books, gardening catalogs, etc. Your inspiration can be anything with special meaning to you, or the person for whom you are designing the quilt. Motifs used in Hawaiian quilts need not be tropical, floral, or even anything from nature. Beautiful quilts have been inspired by the designs in etched glass, chandeliers, architectural elements, hobbies, travel, and so much more. Be open to the possibilities and bring all of your ideas. With internet access we will use Google Images for inspiration, too.
 - Paper*:** 10-20 sheets of copy/printer paper. This can be used paper, or other scratch paper.
 - Newspaper*:** 10 or 12 large sheets, not the small shopping inserts. **OR**
 - Newsprint or butcher paper or wrapping paper on a roll*:** 24" - 36" wide, or wider.
- * A note about paper: The more paper you have the more freedom you will have to design. Don't be skimpy.
- Used file folders or similar cardstock, template plastic, or other similar stiff but cut-able paper or plastic:** Bring at least 4-6 sheets to create templates.
 - Pencils**
 - Art eraser or gum eraser**
 - Paper-cutting scissors:** You'll be cutting through 8 layers of paper, so bring scissors that are easy to hold and won't hurt your hand.
 - Masking or cellophane tape:** Regular, one roll of either. You won't need a lot and may be able to share with others. (Do NOT bring blue/painter's tape.)
 - Optional items:** Fine-point Sharpie or other permanent marker, pencil sharpener, reading glasses, camera or smart phone, 12" ruler, yard stick.

Note: If the Workshop you are registered for is continuing on to begin making your newly designed quilt, see the additional “Hawaiian Quilt Making, 2- or 3-day Workshop Supply List” for fabric and notions required; and use the second page of these instructions for fabric requirements and preparation.

Typical Hawaiian quilt sizes, you can choose other sizes and design accordingly.

WALL QUILT Fabric Requirements:

- 1-1/4 yard* of the appliqué fabric
 - 1-1/4 yard* of the background fabric
- * You want one square of fabric equal to the width (e.g., 42" x 42" or 44" x 44") for the background and the appliqué.
- PLUS 1/2 yard of the fabric you will use for the binding
- No seams required.



2 squares = width of fabric
(e.g., 42" x 42" or 44" x 44")
1 square for appliqué
1 square for background

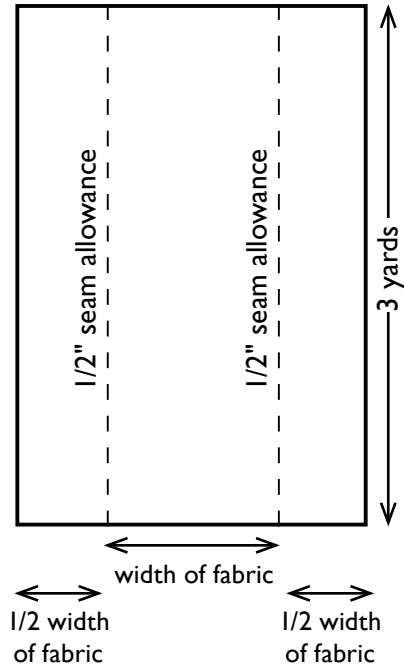
IMPORTANT:

Be sure to select fabrics that are solid, or very nearly solid, with strong contrast in color or value.

FULL / DOUBLE BED

Fabric Requirements & Preparation:

- 6 yards of the appliqué fabric (approx. 42" - 44" wide)
 - 6 yards of the background fabric (approx. 42" - 44" wide)
 - PLUS 1-1/4 yard of the fabric you will use for the binding
- Cut and seam both 6-yard pieces as follows:
- Cut 6-yard length into two 3-yard lengths
 - Split one 3-yard length in half, length-wise
 - Sew the 1/2 width lengths on either side of the full-width length



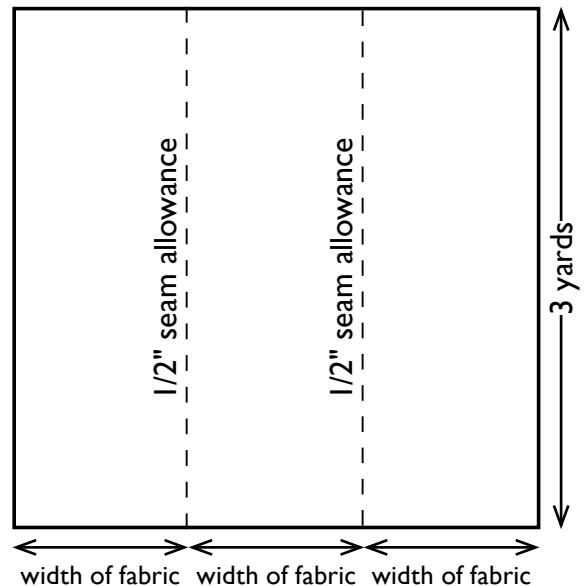
IMPORTANT:

Be sure to select fabrics that are solid, or very nearly solid, with strong contrast in color or value.

QUEEN / KING BED

Fabric Requirements & Preparation:

- 9 yards of the appliqué fabric (approx. 42" - 44" wide)
 - 9 yards of the background fabric (approx. 42" - 44" wide)
 - PLUS 1-1/2 yard of the fabric you will use for the binding
- Cut and seam both 9-yard pieces as follows:
- Cut 9-yard length into three 3-yard lengths
 - Sew the three panels together



IMPORTANT:

Be sure to select fabrics that are solid, or very nearly solid, with strong contrast in color or value.